



Orchard Park Recreation



American Sign Language

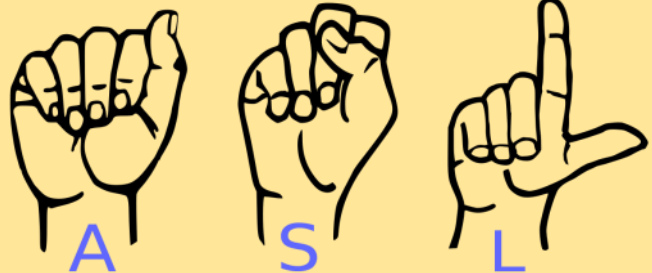
This course is an introduction to American Sign Language (ASL) and Deaf culture. Participants will learn finger spelling, numbers, vocabulary relating to everyday life experiences, grammar, depiction and information on Deaf culture. Emphasis will be placed on a "voices off" policy to focus on use of the language.

The goal of the course is to develop basic ASL skills; expressive and receptive and knowledge of the culture.

Join our instructor, Anna Canale, for this amazing class from the comfort of your own home! Anna will teach via zoom using her tricks of the trade to keep kids of all ages engaged and eager to learn.

Once registered we will send the zoom meeting info to you via email.

- Location:** Your favorite spot at home
- Dates:** Wednesdays
12/9-12/30
- Ages 4-6:** 3:00-3:45PM
- Ages 7-10:** 4:00-4:45PM
- Fee:** \$45.00 (4 sessions)
an additional \$11 fee
for non-residents



Register online at www.oprec.org and save 10% or call 662-6450 for assistance.